

# Mojito PP

14/03/2022

DE 000364353423

German Reg. No. 833574

NAAB 202JE00612

Jersey



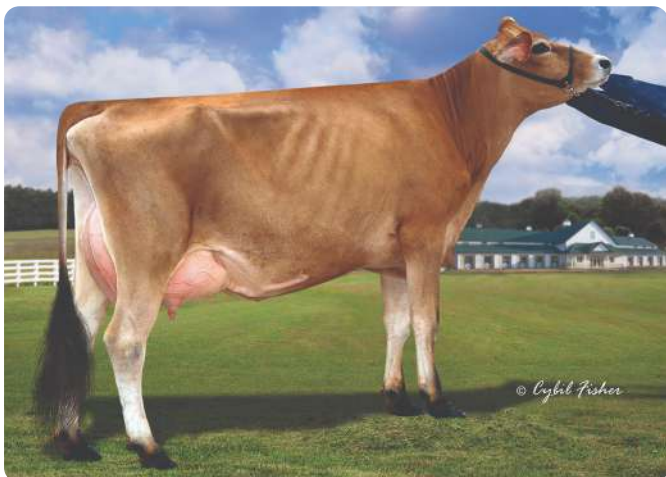
^ MOJITO PP

- + All round package
- + Good Udders
- + ABE Avalanche family

Sire: **MOTOR** (BALTAZA JX)  
 Dam: **JENI**  
 GP-84  
 best lac 2 7169 4.76 341 3.93 282

MGS: **DEMOS P** (LISTOWEL P)  
 MGD: **JELKA**

MGGS: **BARRICADE**  
 MGGD: **ARLENE**  
 EX-90  
 best lac 3 11377 4.80 546 4.18 475



ARLENE (Maternal great grand dam) ^

**JPI 55**

Jersey Performance Index

**NM\$ 39**

Net Merit (\$)

K-Cn **BB** | B-Cn **A2A2** | aAa **156**

0 dtrs / 0 Herds / 76% Rel / 100 % US dtrs

**PRODUCTION**

Milk	<b>401 lbs</b>
Fat	<b>-11 lbs</b>
% Fat	<b>-0.16 %</b>
Protein	<b>15 lbs</b>
% Protein	<b>0.00 %</b>
Combined Fat and Protein	<b>4 lbs</b>
<b>Net Merit (\$)</b>	<b>39</b>
Fluid Merit (\$)	<b>30</b>
Cheese Merit (\$)	<b>43</b>
Grazing Merit (\$)	<b>3</b>

**FUNCTIONAL TRAITS**

<b>Productive Life</b>	<b>1.2</b>	<b>Somatic Cell Score</b>	<b>3.02</b>
<b>Daughter Pregnancy Rate</b>	<b>-1.3</b>	Heifer Conception Rate	<b>0.4</b>
Cow Conception Rate	<b>-1.2</b>	EFI	<b>9.1</b>
gEFI	<b>9.1</b>	Livability	<b>-0.3</b>
Gestation Length	<b>-2.0</b>	Mastitis	<b>0.4</b>
Fertility Index	<b>-1.0</b>		

**CONFORMATION**

0 dtrs / 0 Herds / 79 Rel

<b>PTAT Total Conformation Index</b>	<b>0.2</b>	
<b>Jersey Udder Index</b>	<b>12.7</b>	<b>+</b>
Stature	<b>-0.4</b>	
Strength	<b>0.2</b>	
Dairy Form	<b>-0.1</b>	
Rump Angle	<b>-0.1</b>	
Thurl Width	<b>-0.4</b>	
Rear Legs - Side View	<b>-0.4</b>	
Foot Angle	<b>-0.2</b>	
Fore Udder Attachment	<b>0.1</b>	
Rear Udder Height	<b>0.1</b>	
Rear Udder Width	<b>0.0</b>	
Udder Cleft	<b>0.3</b>	
Udder Depth	<b>-0.2</b>	
Fore Teat Placement	<b>-0.3</b>	
Rear Teat P. Side	<b>0.5</b>	
Teat Length	<b>1.1</b>	

Reference : 04/2026